








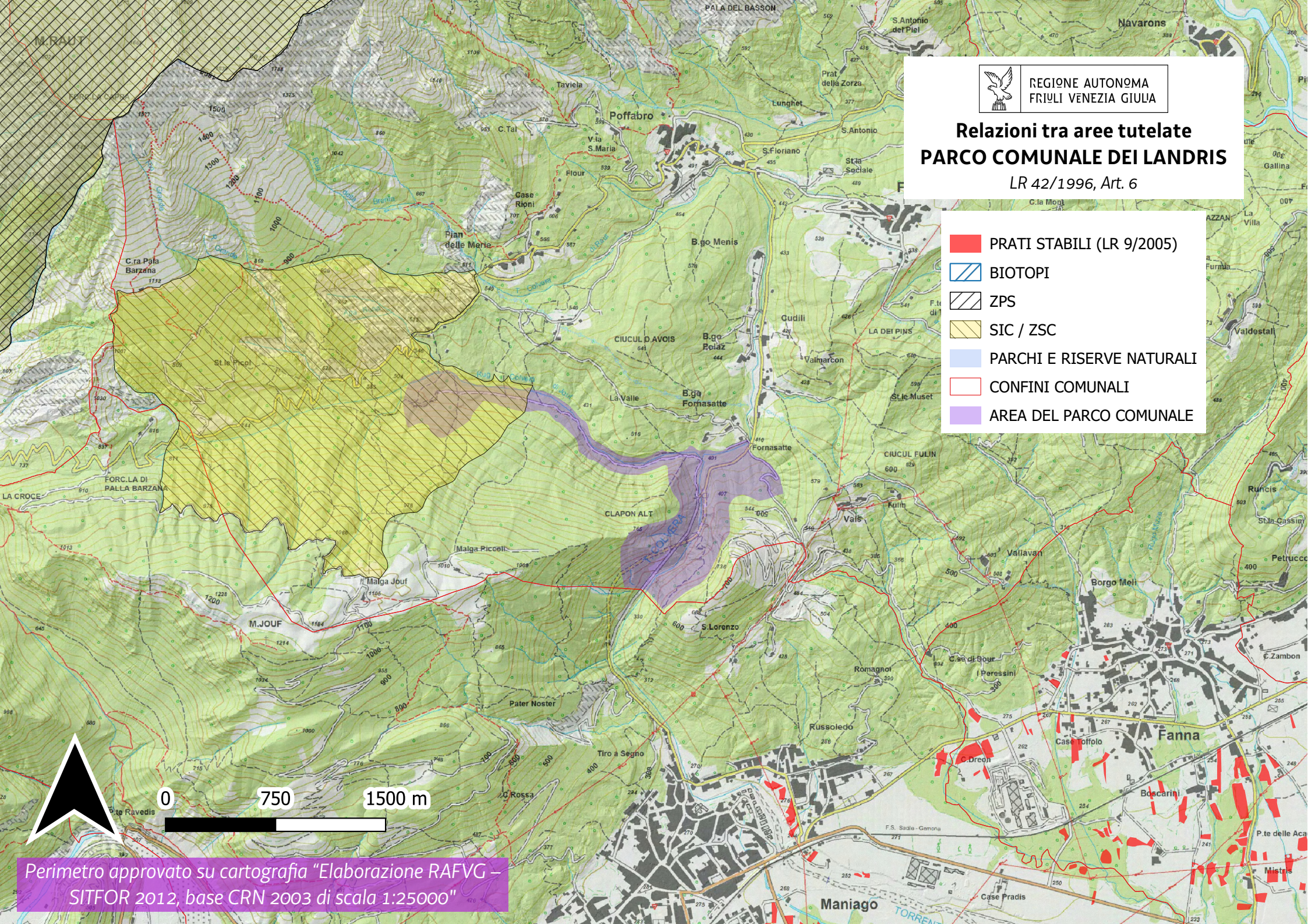


REGIONE AUTONOMA
FRIULI VENEZIA GIULIA

Relazioni tra aree tutelate PARCO COMUNALE DEI LANDRIS

LR 42/1996, Art. 6

-  PRATI STABILI (LR 9/2005)
-  BIOTOPPI
-  ZPS
-  SIC / ZSC
-  PARCHI E RISERVE NATURALI
-  CONFINI COMUNALI
-  AREA DEL PARCO COMUNALE



Perimetro approvato su cartografia "Elaborazione RAFVG – SITFOR 2012, base CRN 2003 di scala 1:25000"